

# Reducing Impaired Driving Deaths

*in Hawaii County*

## A Call to Action

### **NORTH HAWAII OUTCOMES PROJECT**

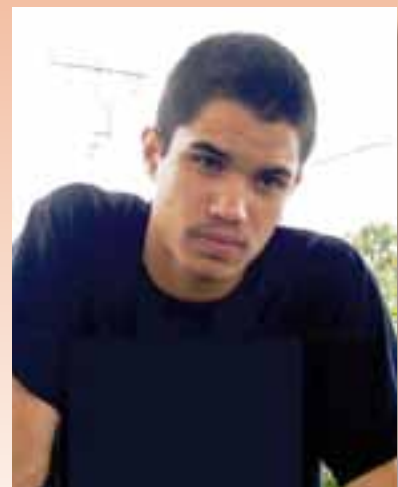
August 31, 2010



December 2007 - May 2009



November 1992 - February 2010



June 1992 - January 2010

Mahalo State Farm®.



# Table of Contents

Summary . . . . .	1
The Problem. . . . .	2-5
Impaired Driving. . . . .	6 - 7
Reducing Impaired Driving is a Shared Responsibility . . . . .	8-15
Police . . . . .	9-10
Prosecutors. . . . .	11
Courts. . . . .	12
Emergency Medical Services . . . . .	13
A Call to Action. . . . .	14 - 16
Resources . . . . .	17
Appendix A – Traffic Safety Laws. . . . .	18
Appendix B – Young Driver / Parent Contract. . . . .	19 - 20
Appendix C – Social Host Liability Law. . . . .	21
Appendix D – Screening Tool for Problem Drinking . . . . .	22
Acknowledgements . . . . .	23
Media Coverage. . . . .	24
Locations of Impaired Driving Fatal Crashes . . . . .	25

UPDATED NOVEMBER 2010



## Summary

# Too Many People Are Dying

Too many innocent victims die from traffic crashes on Hawaii County roads.

Drunk driving is responsible for more than half of the traffic deaths in Hawaii County.

Impaired driving deaths and injuries are 100% preventable.

Reducing traffic deaths from impaired driving is a shared responsibility of:

- Enforcement
- Emergency Medical Systems
- Engineering
- Everyone Else
  - Government (State and County)
  - Employers
  - Restaurants, Bars, and Stores selling alcohol
  - Media
  - Community and Advocacy
  - Schools, Coaches, Parent Teacher Associations, and Drivers Education
  - Parents
  - Families and Friends

Because so many people on the Big Island have been touched personally by traffic deaths or serious injuries of family or friends, traffic safety has become a grass roots issue. This has led to strong island-wide collaboration to: reduce drinking and driving, enforce DUI laws, improve DUI laws, improve roads, bike paths, and pedestrian walkways, and improve access to timely trauma care. There is also growing collaboration at the state level through the Strategic Highway Safety Plan. Some progress has been made. The traffic deaths in Hawaii County decreased between 2004-2009.

However, the number of traffic deaths for the first half of 2010 is 19, compared to 14 for the same time frame for 2009. This reflects a 35% increase. Too many people die from traffic crashes on Hawaii County roads.

Reducing traffic deaths and injuries from impaired driving is a shared responsibility.

This report is dedicated to the victims and their families and friends in appreciation for their efforts to prevent further loss of life from drunk driving.

Together, we can prevent impaired driving deaths and injuries!

*- Sharon H. Vitousek, M.D.*

*Director, North Hawaii Outcomes Project*

*-Lisa Onorato,*

*Program Coordinator*

*Mothers Against Drunk Driving, Hawaii County*

# Too Many People Die from Traffic Crashes on Hawaii County Roads



## The Problem

These innocent victims and too many like them, died from impaired driving crashes. All of the victims are deeply missed by their families and friends, whose lives will never be the same.

Angela Apostadiro, 17, died February 23, 2010. The van she was riding in was hit by a drunk driver with a blood alcohol content level greater than the legal limit of 0.08. The driver had a prior arrest for DUI.

*"Our Angela is so missed by everyone. She was such a benefit to all. Angela was so kind. She was truly my miracle baby and also she was my best friend. Angela will be the world's biggest loss." –Angela's Mom.*

Gary "Baba" Gonsalves, 17, died on January 20, 2010. His car was hit by a drunk driver with a blood alcohol content level greater than the legal limit of 0.08.

*"Your laughter, your beautiful smile, your tears of joy and pain, your compassion filled heart, your warm embrace. We miss you... but we will cherish you forever... Through us, your daughter will know and love you." –Baba's Aunty.*

Aliyah Braden, 17 months, died on May 23, 2009. The vehicle she was riding in was hit by a drunk driver with a blood alcohol content level greater than the legal limit of 0.08.

*"Aliya was so happy. Her smile and twinkling eyes brought joy to her family, friends and everyone lucky to meet her. Now, her potential to share those gifts is gone." –Aliyah's Dad*



**Angela Apostadiro**  
November 1992 - February 2010



**Gary "Baba" Gonsalves**  
June 1992 - January 2010

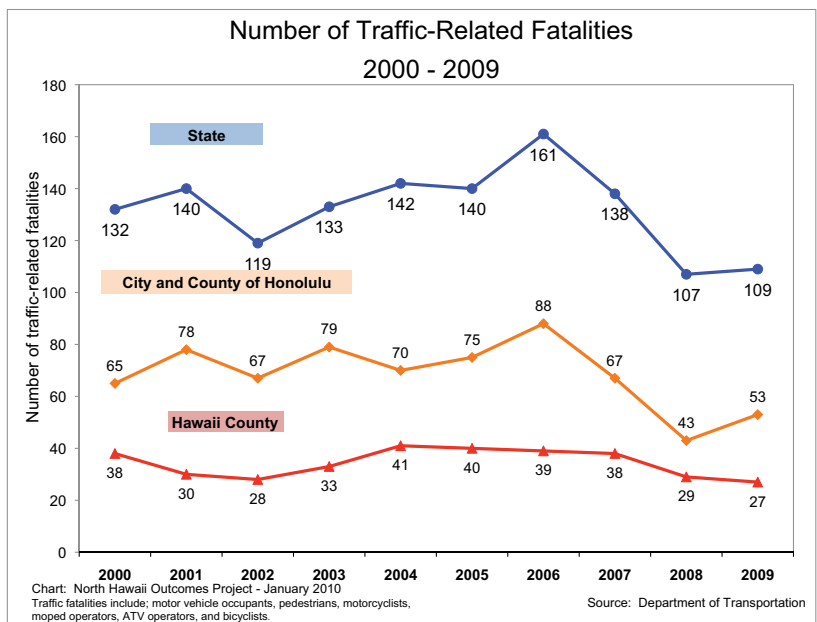
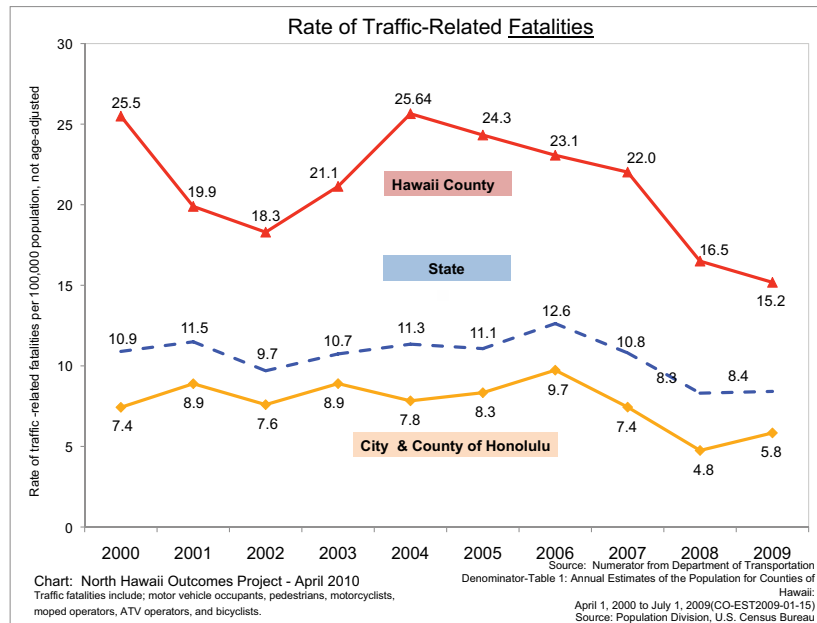


**Aliyah Braden**  
December 2007 - May 2009

# The Problem

## Too Many People Die From Traffic Crashes on Hawaii County Roads

- The rate of traffic-related deaths in Hawaii County is nearly three times higher than the death rate in the City and County of Honolulu, between 2001 and 2009.
- Traffic-related fatalities include: motor vehicle occupants, pedestrians, motorcyclists, moped operators, ATV operators and bicyclists.
- A total of 343 people died from traffic crashes on Hawaii County roads, between 2000 – 2009. For the same time period, the average number of traffic-related deaths per year in Hawaii County was 34. The number of Hawaii County traffic deaths has decreased slightly each year since 2004.
- However, the number of traffic deaths for the first half of 2010, through June 30, 2010 is 19 compared to 14 for the same time frame from 2009. This reflects a 35% increase



## The Problem

Impaired Driving From Alcohol is Responsible for More Than Half of the Traffic Deaths and far too many injuries in Hawaii County.

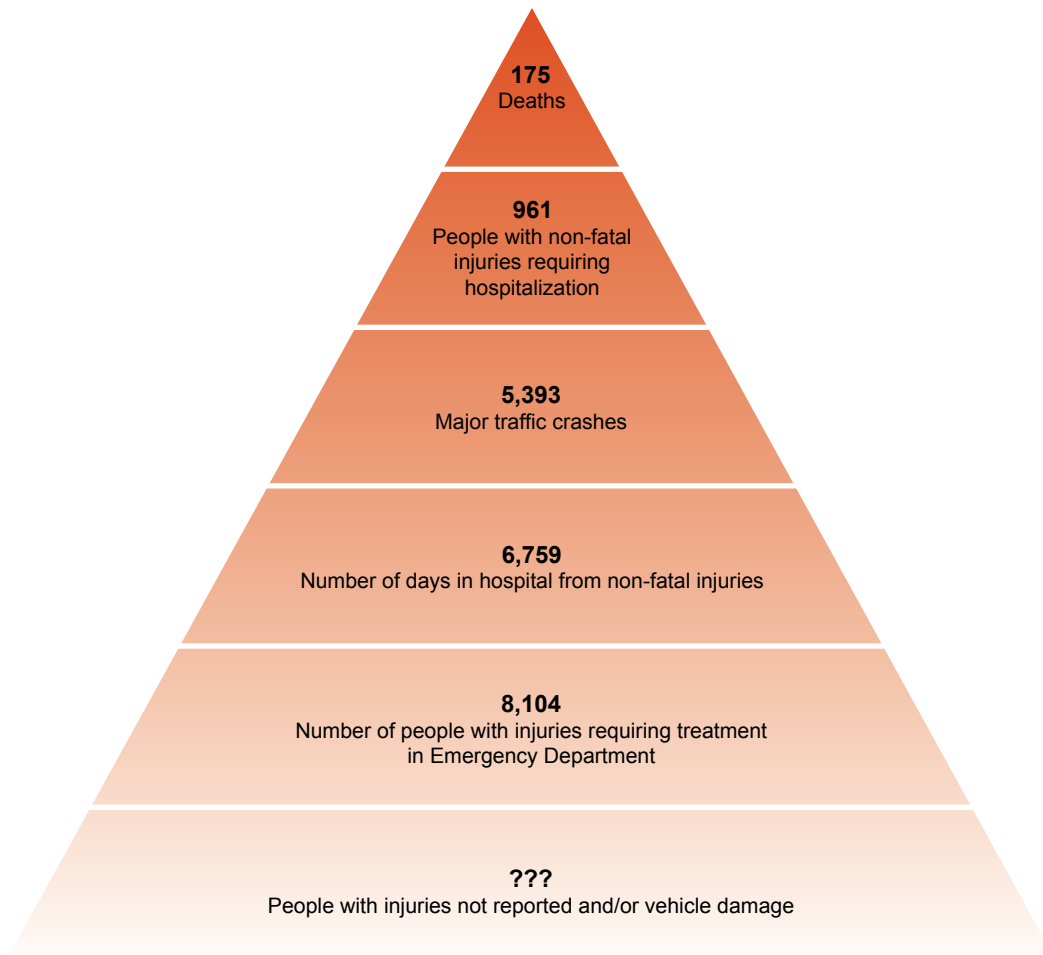
From 2000 – 2009:

- 343 people died from traffic crashes on Hawaii County roads.
- More than 171 people died from alcohol-related crashes on Hawaii County roads.

From 2006 – 2009:

- 8,104 people were injured in traffic crashes in Hawaii County and required treatment in an Emergency Department.

### Deaths and Injuries in Hawaii County 2006 - 2009

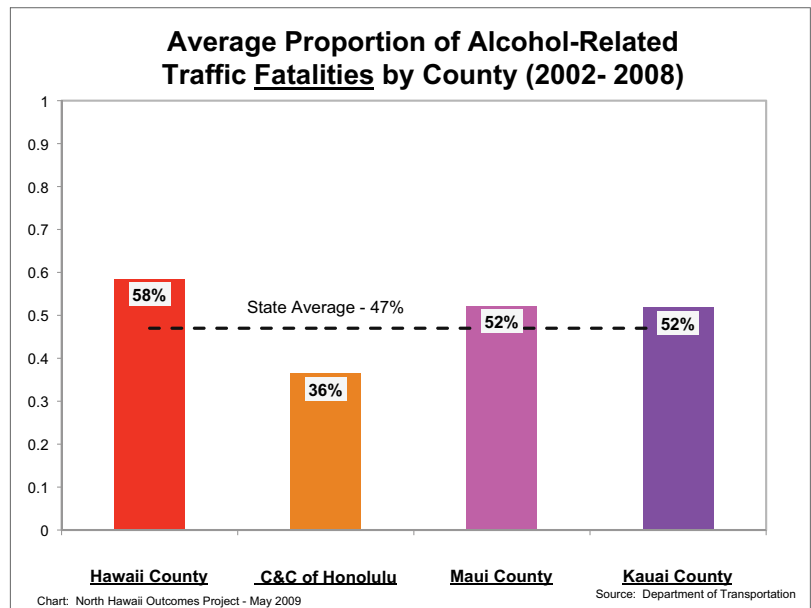


Source: Dan Galanis, Ph.D., Department of Health, Injury Prevention and Control Program

# Impaired Driving

## Impaired Driving from Alcohol is Responsible for More Than Half of the Traffic Deaths in Hawaii County

- More than half of the Hawaii County traffic deaths (58%) were alcohol-related, between 2002 and 2008. This proportion is higher than the other counties and 12% higher than the State average for the same time. In 2006, the national average was 40% and Hawaii was the State with the highest proportion of alcohol-related traffic deaths (National Highway Traffic Safety Association, 2006).
- **ALCOHOL-RELATED FATALITY** – is a death that occurs in crash involving at least one driver, pedestrian, or pedalcyclist with a BAC of 0.01 or above (National Highway Traffic Safety Association, Traffic Safety Facts, August 2007).
- **DUI-RELATED FATALITY** – is a death that occurs in a crash involving at least one driver or motorcycle operator who was legally intoxicated (BAC=0.08+ (National Highway Traffic Safety Association, Traffic Safety Facts, August 2007).
- **ALCOHOL-RELATED TRAFFIC CRASHES** are defined by the U.S. National Highway Traffic Safety Administration to include any and all vehicular (including bicycle and motorcycle) accidents in which any alcohol has been consumed, or believed to have been consumed, by the driver, a passenger or a pedestrian associated with the accident (Alcohol-related traffic crashes in the United States (September 24, 2007).



SADDLE ROAD, HAWAII COUNTY CRASH

## Impaired Driving

Impaired Driving Deaths and Injuries are 100% Preventable.

Reducing Traffic Deaths and Injuries from Impaired Driving  
is a Shared Responsibility.



**A COLLABORATIVE EFFORT . . . A SHARED RESPONSIBILITY**

## Shared Responsibility

Reducing Traffic Deaths and Injuries from Impaired Driving  
is a Shared Responsibility of:

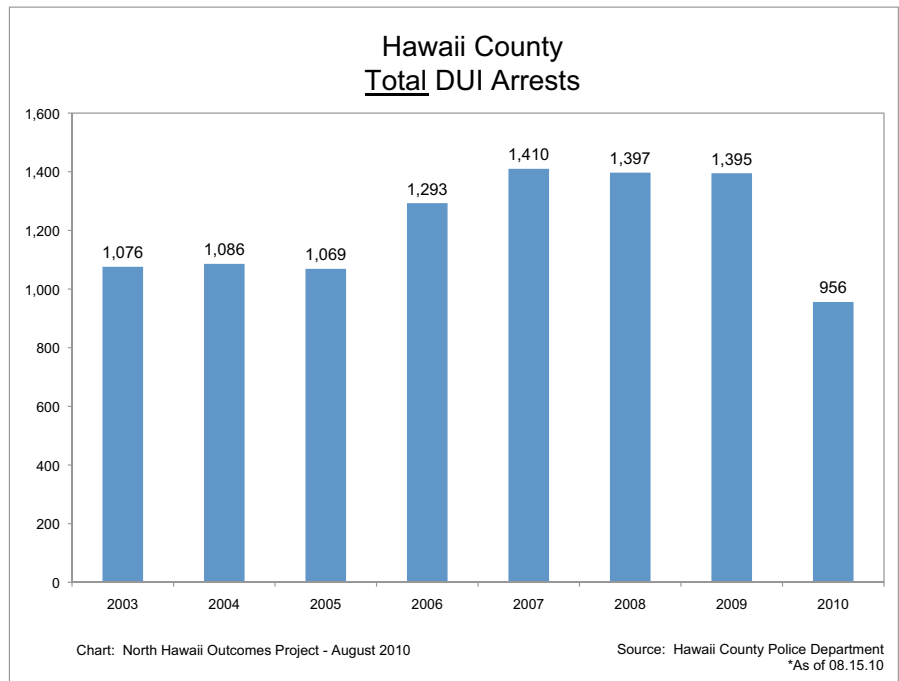
- Enforcement
  - Police
  - Prosecutors
  - Criminal courts
  - Civil courts
- Emergency Medical Systems
- Engineering
- Everyone Else
  - Government (State and County)
  - Employers
  - Restaurants, Bars, and Stores selling alcohol
  - Media
  - Community and Advocacy
  - Schools, Coaches, Parent Teacher Associations, and Drivers Education
  - Parents
  - Families and Friends

## Shared Responsibility - Enforcement Police

### Reducing Traffic Deaths from Impaired Driving is a Shared Responsibility

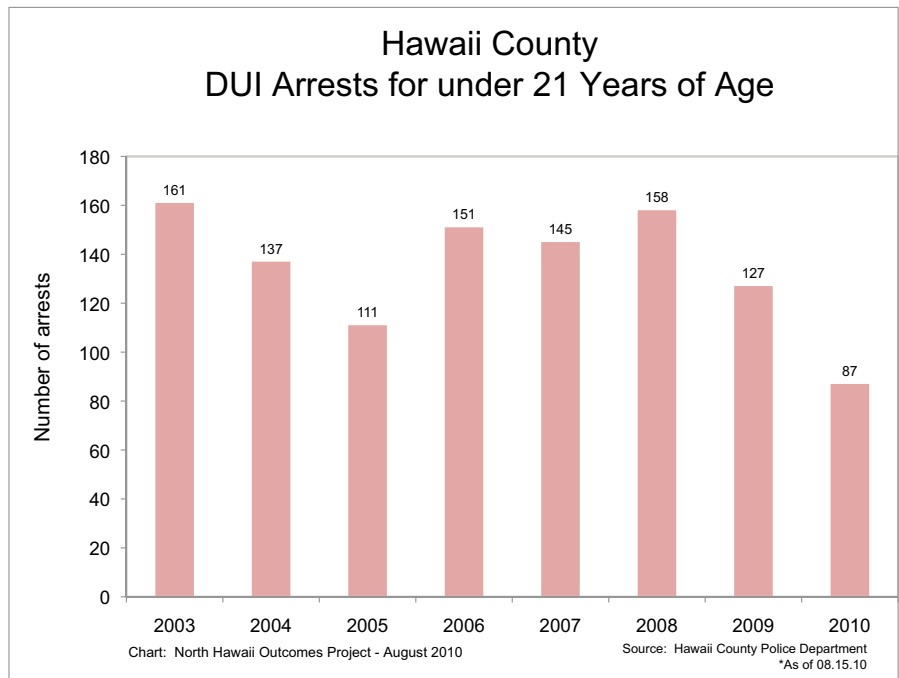
#### *Police Are Increasing DUI Arrests*

- The annual number of DUI arrests in Hawaii County increased by 30% between 2003 - 2009.



#### *Police Are Targeting Enforcement of DUI Laws for Drivers Under 21*

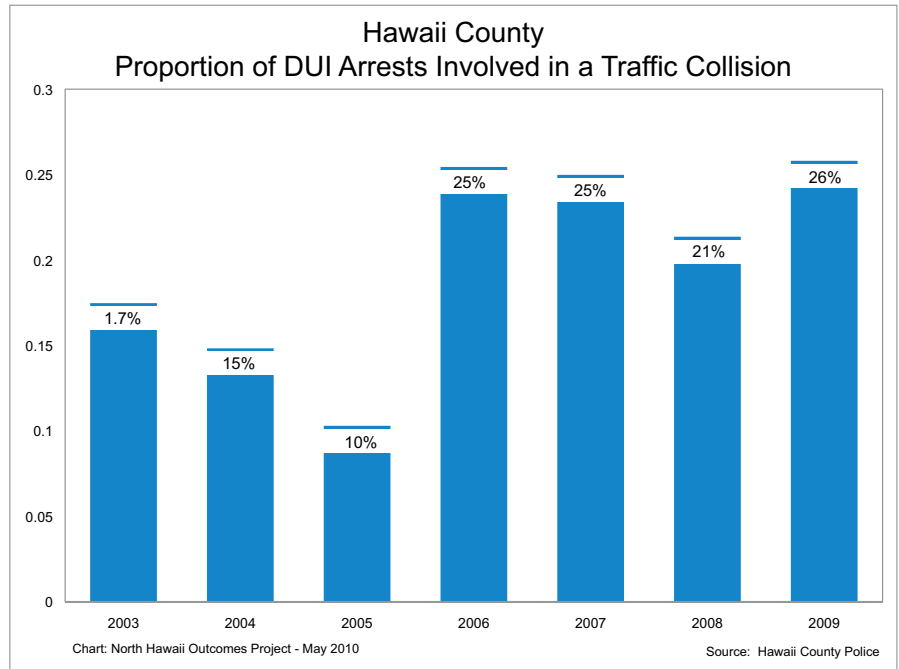
- The number of DUI arrests for drivers under 21 years of age for Hawaii County increased from 111 in 2005 to 127 in 2009.



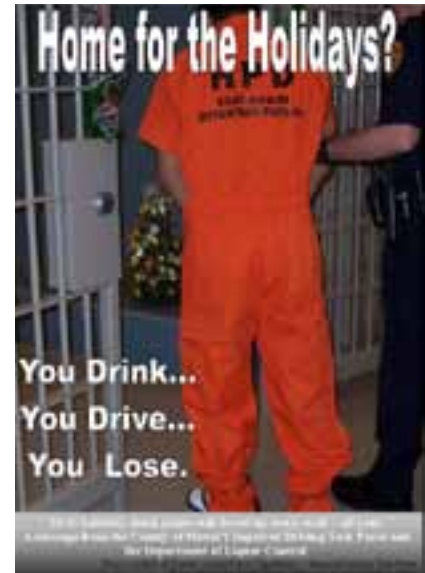
## Shared Responsibility - Enforcement Police

### *Police Are Increasing Testing of Drivers Involved in Crashes for Alcohol*

- Since 2005, Hawaii County police are testing significantly more drivers involved in crashes for alcohol.



### *Police Are Increasing Prevention Efforts Through the Media*



## Shared Responsibility - Enforcement Prosecutors

---

### *Prosecutors have Increased Training for Effective Enforcement of DUI Laws*

---

- Prosecutors have implemented multi-disciplinary training for prosecutors and police on best practices for enforcement of traffic safety laws.
  - During the last two years, the Office of the Prosecuting Attorney has provided training to nearly 200 prosecutors, police and other first responders throughout the State of Hawaii.
    - Training has included:
      - Crash Reconstruction
      - Basic skills in enforcement and prosecution of traffic-related crimes, specializing in “Operating a Vehicle Under the Influence of an Intoxicant” (OVUII)
      - Trial skills for prosecutors
- Prosecutors have facilitated inter-disciplinary process improvement and communication improvement between police, prosecutors and Administrative Driver License Revocation Office, as well as between police and emergency room physicians.

---

### *Prosecutors are Taking a Leadership Role*

---

- Prosecutors have taken a leadership role in the Governors Highway Safety Committee, Hawaii County Highway Safety Council, Strategic Highway Safety Plan, Hawaii County Impaired Driving Taskforce, and the Motor Vehicle Crash Reduction Group.

---

### *Prosecutors are Increasing Prevention Efforts*

---

- Prosecutors have implemented high school student drunk driving prevention projects, “Shattered Dreams” at several High Schools on Hawaii Island, since 2003.
- Prosecutors have provided funding through asset forfeiture for the “Taxi Share” ride program
- Prosecutors have also collaborated on the “Choose Your Ride” campaign.

## Shared Responsibility - Enforcement Courts

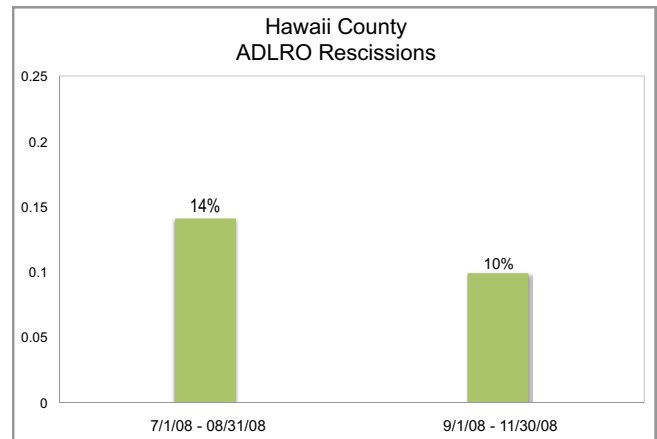
### *Court Monitoring Helps to Improve Criminal DUI Processes*

- Through a grant to the University of Hawaii At Hilo - Hawaii Community College, a total of 2,160 DUI court sessions in Hawaii County were monitored between 2006 – 2009.
- Opportunities to improve DUI processing identified by court monitors were shared with the courts, police and the prosecutor's. Following that feedback, there have been several improvements including:
  - Shorter total time to process DUI cases.
  - Fewer court continuances to process DUI cases.

<b>Court Monitoring Program</b>		
<b>Year</b>	<b>Court</b>	<b>Total</b>
2006 - 07	Hilo District Court	535
2007 - 08	Honokaa and Keaau Courts	999
2008 - 09	Kona District Court	628
<b>Total</b>		<b>2,160</b>

### *Improvements Are Being Made in the Administrative Revocation of License (ADLRO) and the Civil DUI Processes*

- Following meetings between the ADLRO office, police and prosecutor's, improvements to the ADLRO processing in Hawaii County of DUI arrests have been made. A pilot review of cases showed a decrease in dismissals after implementation of improvements.
- For more information on ADLRO see [http://www.courts.state.hi.us/self-help/adlro/adlro\\_links.html](http://www.courts.state.hi.us/self-help/adlro/adlro_links.html)



## Shared Responsibility - Emergency Medical Systems

---

### *Emergency Medical Systems and Hospitals are Working to Improve Trauma Care*

---

- With support of the Department of Health, all three acute care hospitals on Hawaii Island, North Hawaii Community Hospital, Kona Community Hospital and Hilo Medical Center, are working to become Level III certified Trauma Centers.
- There is clear evidence that screening in the emergency room for problem drinking combined with brief intervention and referral to treatment is effective to reduce recurrent alcohol-related trauma (Screening, Brief Intervention, and Referral to Treatment, Centers for Disease Control and Prevention, 2010). The Queen's Medical Center Emergency Department implemented a screening brief intervention program in its emergency department in 2008.
- Hilo Medical Center partnered with the Prosecutor's Office and Waiakea High School student drinking and driving prevention through a Shattered Dreams Project April 2010. (DVD's to support high school student prevention efforts are available through the Office of the Prosecuting Attorney, Mitch Roth (808) 934-3508).
- Kona Community Hospital has plans to implement an alcohol screening program.



**HILO MEDICAL CENTER**



**KONA COMMUNITY HOSPITAL**



**NORTH HAWAII COMMUNITY HOSPITAL**

## A Call to Action

### Together, We Can Prevent Impaired Driving Deaths and Injuries.

#### Enforcement (Police)

- Can continue to support high visibility enforcement of DUI laws, especially drivers under 21.
- Can collaborate to address the challenge of repeat DUI offenders.

#### Enforcement (Criminal Courts)

- Can continue to improve processing of DUI offenders, especially repeat offenders.
- Can improve effective links to alcohol assessment and treatment programs.



COLLABORATIVE EFFORT - SIGN WAVING MARCH 15, 2010

#### Enforcement (ADLRO – Civil Courts)

- Can continue to improve processing, tracking of dismissal rates, and timely feedback to police.

#### Engineering

- Can work to obtain and use timely crash location data to help to effectively allocate resources and can integrate safety into all projects.
- Can increase collaboration between county and state.
- Can continue working on engineering improvements including centerline rumble strips, milled rumble strips and Safety Edge, etc. These measures reduce the possibility of crashes as well as reduce the severity of crashes.

#### Emergency Medical Systems

- Emergency Room's can implement screening, brief intervention and referral to treatment for trauma patients with risky alcohol or drug use in the Emergency Room. See <http://sbirt.samhsa.gov/about.htm>, or [www.alcoholscreening.org](http://www.alcoholscreening.org).
- Chemical dependency Programs - can collaborate with police to improve access to effective treatment for problem drinking and repeat DUI offenders.
- Primary Care Providers - can increase identification and treatment of chemical dependency and problem drinking and co-occurring illnesses such as depression.

#### Government (State)

- Can support countywide collaboration by providing accurate and timely county level traffic data for both deaths and collisions.
- Can support implementation of ignition interlock for convicted DUI offenders.

#### Government (County)

- Can support countywide collaboration through continuing to fund a Hawaii County Traffic Safety Coordinator position.
- Can support interdisciplinary collaboration for traffic safety and traffic safety planning.
- Can support collaboration between county and state on enforcement, engineering, emergency medical services, and data and safety management systems.

# A Call to Action

## Together, We Can Prevent Impaired Driving Deaths and Injuries.

### Employers

- Can review the *Guide for Employers to Reduce Motor Vehicle Crashes* drinking and driving policies. See [www.osha.gov/Publications/motor\\_vehicle\\_guide.html](http://www.osha.gov/Publications/motor_vehicle_guide.html)

### Restaurants, Bars, Stores Selling Liquor (Alcohol)

- Can implement increased server training for alcohol servers. See [www.cudtf.org/webppt/RASSreviewpaper.04.doc](http://www.cudtf.org/webppt/RASSreviewpaper.04.doc) and see Training for Intervention Procedures (TIPS) <http://gettips.com/>

### Media

- Can highlight the impact of alcohol-related deaths and injuries, the efforts to reduce and the resources to help.
- Can increase awareness of high visibility police enforcement of DUI laws.

### Schools, Coaches and Parent Teacher Associations

- Can set clear expectations for **adults** working with students to follow all traffic safety laws.
- Can develop clear policies regarding **student** alcohol use. See <http://www.stopalcoholabuse.gov/media/GuidetoActionforEducators.pdf>
- Can help students and parents understand the risks of drinking and driving, as well as, the DUI laws, especially social host liability laws and the consequences of breaking those laws.
- Can distribute the Young Driver Contract to students and parents, and can encourage safe driving.
- Can share the *Shattered Dreams* DVD done by Waiakea High School with parents and students by calling the Prosecutor's Office, Mitch Roth at (808) 934-3508.
- Driver education teachers can distribute the Young Driver Contract to parents and students.
- Can review evidence-based curriculums to prevent drinking and driving. See [www.toosmarttostart.samhsa.gov/](http://www.toosmarttostart.samhsa.gov/) and/or [www.stopimpaireddriving.org/toolkits.html](http://www.stopimpaireddriving.org/toolkits.html)
- Can encourage students to participate with existing efforts to reduce drinking and driving by calling MADD Hawaii County, Jennifer Dotson, Executive Director at (808) 934-3400 or the Impaired Driving Taskforce, Dieter Blatter at (808) 961-2226 or NHOP at (808) 887-2425.
- Can support the Youth in Action Program for high schools by calling MADD Hawaii County, Jennifer Dotson, Executive Director at (808) 934-3400.

### Parents

- Can ask their teenage children to sign the Young Driver Contract, see page 19-20.
- Can understand and follow traffic safety laws especially, graduated licensing and social host liability laws.
- Can communicate clear prevention messages to their children. See [www.myparents.com/parenting-matters/underage-drinking](http://www.myparents.com/parenting-matters/underage-drinking). See Parents Who Host, Lose the Most, and Social Host Liability Law on page 21. [http://www.nhtsa.dot.gov/PEOPLE/INJURY/alcohol/StopImpaired/planners/2311\\_ParentYouthPlanner/pages/OpEd.htm](http://www.nhtsa.dot.gov/PEOPLE/INJURY/alcohol/StopImpaired/planners/2311_ParentYouthPlanner/pages/OpEd.htm)

### Families and Friends

- Can encourage family and friends who drink, to take the survey to assess how much is too much. See screening tool at [www.alcoholscreening.org](http://www.alcoholscreening.org).

## A Call to Action

### What you can do now:

Commit to yourself, family, friends, customers and coworkers:

- “I’ll drive sober or get a ride.”
- “I’ll help my family and friends to drive sober or get a ride.”

Learn more:

- See attached resources
- See <http://www.nhop.org/2008Final/HIEMV10.htm>

Join others:

- County -Mothers Against Drunk Driving (MADD)  
<http://maddhawaii.ning.com/page/madd-hawaii-county>,  
Jennifer Dotson, Executive Director, (808) 934-0300.
- State -Mothers Against Drunk Driving (MADD)  
<http://www.maddhawaii.com>  
(808) 532-6232.
- Hawaii County Impaired Driving Taskforce Coordinator  
Dieter H. Blattler (808) 961-2226.
- Hawaii State Strategic Highway Safety Plan, Impaired Driving Emphasis Area Chair,  
Arkie Koehl at (808) 529-0908.

# Resources

## HAWAII COUNTY

- Hawaii County Police – [www.hawaiipolice.com](http://www.hawaiipolice.com)
- North Hawaii Outcomes Project – Drive Safely Cards  
<http://www.nhop.org/2008Final/documents/DriveSafelyCards02.25.10.pdf>
- Community Road Safety Watch – Reporting Reckless Driving  
[http://www.nhop.org/2008Final/documents/CommunityRoadSafetyWatch\\_Solutions200007.09\\_\\_000.pdf](http://www.nhop.org/2008Final/documents/CommunityRoadSafetyWatch_Solutions200007.09__000.pdf)
- MADD <http://maddhawaii.ning.com/page/madd-hawaii-county>

## STATE

- Hawaii Strategic Highway Safety Plan 2007-2012–  
<http://hawaii.gov/dot/highways/shsp-1> [www.maddhawaii.com](http://www.maddhawaii.com)
- MADD – [www.maddhawaii.com](http://www.maddhawaii.com)

## NATIONAL

- AASHTO / NHRP – Strategic Highway Safety Plan Implementation Guides –  
[www.safetytransportation.org/guides.aspx](http://www.safetytransportation.org/guides.aspx)
- Centers for Disease Control and Prevention – State Specific Driver Licensing Information –  
[www.cdc.gov/ncipc/duip/grsw/state\\_maps/state\\_specific\\_sites.htm](http://www.cdc.gov/ncipc/duip/grsw/state_maps/state_specific_sites.htm)
- Community Road Safety Watch – reporting Reckless Driving –  
[www.nhop.org/2008Final/documents/CommunityRoadSafetyWatch\\_000.pdf](http://www.nhop.org/2008Final/documents/CommunityRoadSafetyWatch_000.pdf)
- Counter Measures That Work  
<http://www.ghsa.org/html/publications/index.html>
- Magnitude and Prevention of College Age and Underage Drinking Problems -  
<http://www.ghsa.org/html/meetings/annual/2008/presentations/14.Hingson.pdf>
- Screening , Brief Intervention and Referral to Treatment Resources
  - <http://sbirt.samhsa.gov/>
  - <http://www.cdc.gov/injuryresponse/alcohol-screening/>
  - [www.alcoholscreening.org](http://www.alcoholscreening.org)
- Too Smart to Start Curriculum, U.S. Department of Health and Human Services –  
[www.toosmarttostart.samhsa.gov](http://www.toosmarttostart.samhsa.gov)
- Turning Knowledge into Action –  
[www.ghsa.org/html/meetings/annual/2008/presentations.html](http://www.ghsa.org/html/meetings/annual/2008/presentations.html)
- SADD – [www.sadd.org](http://www.sadd.org)
- MADD – [www.madd.org](http://www.madd.org)

## Appendix A - Traffic Safety Laws

### 1997

- Act 101 mandates healthcare providers to report to police the results of a blood alcohol level greater than the legal limit, if they have reasonable belief that the person may have been a driver in a motor vehicle collision causing injury.

### 2003

- Social Host Liability Law – created civil liability for adults serving or providing alcohol to persons under the age of 21, resulting in death or injury to a third party.

### 2005

- Act 72 establishes Graduated Drivers Licensing Program for drivers under 18 years of age.

### 2006

- Act 202 prohibits the consumption of liquor by minors.
- Act 203 “Use and Lose” requires judges to impose a 180 day drivers license suspension for minors under 21 when the person has violated laws related to underage drinking: consumption, possession, purchase, attempt to purchase or use of a fraudulent identification.

### 2007

- Act 175 requires child safety seat or booster seat usage for children over four years, but less than eight years old. See [www.6.hawaii.gov/dot/publicaffairs/safecommunities/boosterseat.htm](http://www.6.hawaii.gov/dot/publicaffairs/safecommunities/boosterseat.htm).
- Act 201 increases sanctions for driving with a high blood alcohol level, greater or equal to 0.15.
- Act 129 establishes the offense of excessive speeding and increases the penalty for this violation.
- Act 63 mandates safety helmet use for moped drivers under the age of 18 years.
- Act 64 helps to streamline the process for DUI arrest.

### 2008

- Act 171 establishes taskforce for Ignition Interlock.

### 2009

- Act 88 establishes Ignition Interlock improvements.
- Act 46 mandates drivers of commercial vehicles are legally drunk when their blood alcohol level is .04 percent or greater.

### 2010

- Act 166 enacts implementation recommendations of the Ignition Interlock Taskforce.

# Appendix B - Young Driver - Parent/Guardian Contract

## TO SUPPORT OUR COMMON GOAL TO BE SAFE DRIVERS

We, \_\_\_\_\_ and \_\_\_\_\_  
(Names of Parents or Guardian) (Name of Young Driver)

agree to the following conditions:

### 1. Young Driver Responsibilities

Initial all that apply:

- I will not let anyone else drive or use the vehicle entrusted to me.
- I will not break driving laws. Any violations may result in a loss of vehicle privileges.
- I will not consume drugs or alcohol in the vehicle or operate any vehicle under the influence of alcohol or illicit drugs. Any violation will result in the loss of vehicle privileges.
- Everyone in the vehicle must wear a seat belt and keep it fastened at all times.
- I will state my destination and time of return prior to using any vehicle. I will notify my parents if I think I will be more than 30 minutes late.
- I will drive in a manner not to endanger my life, the lives of my passengers, or anyone else on the road.

### 2. Cost and Maintenance of Vehicle

\_\_\_\_\_ will be responsible for the following:  
(Name of Young Driver)

Indicate dollar amount or percentage of cost:

- Cost of vehicle
- Cost of fuel
- Damage to the vehicle
- Insurance costs
- Vehicle registration
- Maintenance costs
- Fines and penalties
- Other

Check all that apply:

- Checking the fluids regularly
- Inspecting tires and checking air pressure
- Reporting unusual performance
- Keeping the interior and exterior clean
- Other
- Do normal maintenance
- Clear or clean all windows
- Report or re-fuel when gas tank is less than 1/4 full

### 3. Driving Privileges

This portion of the contract may be used to outline any additional conditions or limits on the use of the vehicle as agreed to by teens and parents:

---

---

---

---

---

# Appendix B - Young Driver - Parent/Guardian Contract

## 4. Parental Responsibilities

Initial all that apply:

- \_\_\_\_\_ I will listen in a respectful manner to explanations or concerns expressed by my young driver regarding the operation of a vehicle or the terms of the contract.
- \_\_\_\_\_ I will provide respectful feedback when accompanying my young driver in a motor vehicle.
- \_\_\_\_\_ I will serve as a good role model when operating a vehicle and teach good driving skills and habits to my young driver.

## 5. Operator Impairment as a Result of Alcohol and Illicit Drugs.

A. Young Driver's Responsibility. I will not get into the vehicle of a driver who has been drinking or using illicit drugs. I will seek alternative transportation or I will call you for advice and/or transportation at any hour from any place.

\_\_\_\_\_ (Initial, Parent or Guardian)      \_\_\_\_\_ (Initial, Young Driver)

B. Parent or Guardian's Responsibility. I (We) agree to come and get you at any hours, from any place, with no questions asked and no argument at that time, or I (we) will pay for a taxi to bring you home safely. I (we) expect that a discussion of such an incident would follow at a later time.

Likewise, I (We) as you parent or guardian, agree to seek safe, sober transportation. I (we) will not drive if I (we) have been drinking, nor will I (we) ride with a friend who has been drinking.

\_\_\_\_\_ (Initial, Parent or Guardian)      \_\_\_\_\_ (Initial, Young Driver)

## Legal Penalties

Under current Hawaii law, all new drivers under 18 years of age operate first with an instructional permit followed by a provisional license, before they are eligible for a full license. Moving violation such as speeding, failure to obey traffic lights or stop signs, and other reckless driving offenses will result in the loss of the provisional license as follows:

<i>First offense</i>	<i>Loss of license for 6 months</i>
<i>Second offense</i>	<i>Loss of license for one year</i>

Drivers under 21 years of age who operate a vehicle after consuming a measurable amount of alcohol (0.02) are subject to the following penalties:

<i>First offense</i>	<i>Loss of license for 6 months</i>
<i>Second and subsequent offenses</i>	<i>Loss of license for one year</i>

## 6. Liabilities.

All drivers are legally responsible for their own actions as a driver and vehicle owners may be legally liable for damages caused by any person operating the owner's vehicle.

Parents and young drivers should understand that insurance coverage and rates may be affected by any damages that result from the inappropriate use of the owner's vehicle.

We agree to the terms of this contract, which may be revisited or revised at a later time.

\_\_\_\_\_  
(Signature of Parent or Guardian)

\_\_\_\_\_  
(Signature of Parent or Guardian)

\_\_\_\_\_  
(Signature of Young Driver)

\_\_\_\_\_  
Date

*Adapted from Marthew Dunlap, Secretary of State, Maine*

## Appendix C - Social Host Liability Law

### WHAT IS SOCIAL HOST LIABILITY LAW?

Social Host liability law refers to adults who knowingly or unknowingly host underage drinking parties on property that they own, lease or otherwise control. Through social host liability laws, adults can be held responsible for these parties, regardless of who furnishes the alcohol.

Teen parties are the primary setting for underage drinking for high school and college students – and a high consumption of alcohol and binge drinking. Ranches “where no one will know,” beach houses “where no one will care” and fields “where it just doesn’t matter” are all popular locations for teenage drinking parties. However, the most common setting for drinking among high school seniors is simply someone else’s home.

### HOLDING ADULTS RESPONSIBLE

Mothers Against Drunk Driving (MADD) believes that underage drinking is not just a youth problem. It is also very much an adult problem. With adults who purchase alcohol for those under age 21; look the other way when teens talk about their drinking exploits; and host teenage drinking parties in their homes, many communities struggle to prevent underage drinking.

Holding adults responsible for underage drinking parties is a pro-active step for concerned communities, but can be difficult. Law enforcement officials are typically not able to determine who provided the alcohol when they arrive on the scene of a teenage drinking party. Therefore, laws that prohibit furnishing alcohol to youth under 21 years old can be hard to enforce.

Social host ordinances give communities a practical tool for holding adults accountable. These laws allow law enforcement to cite the individual who hosted the underage drinking party on their property. More than 150 cities or counties and 24 states, including Hawaii, have adopted social host ordinances.

### BENEFITS OF EDUCATING COMMUNITIES ABOUT SOCIAL HOST

- Deterring adults and youth under age 21 from hosting parties where underage drinking is occurring
- Increasing the awareness of underage drinking parties and providing an incentive for hosts to be vigilant for underage consumption of alcohol
- Encouraging parents to take steps to prevent teenage drinking parties while they are away
- Holding underage youth partially accountable for underage drinking parties planned without the knowledge of their parents
- Recovering the costs for law enforcement of repeatedly responding to the same party site
- Officially establishing a community’s “zero-tolerance” policy for underage drinking.

### TAKE ACTION

To more actively prevent underage drinking and help save more lives, MADD encourages communities to become familiar with social host ordinances to prevent underage drinking. Learn more about how your community can get involved with social host.



## Appendix D - Screening Tool for Problem Drinking

### How Much is Too Much?

#### SCREENING FOR ALCOHOL PROBLEMS IN THE ED

##### NIAAA QUANTITY AND FREQUENCY QUESTIONS

- On average, how many days per week do you drink alcohol?
- On a typical day when you drink, how many drinks do you have?
- What is the maximum number of drinks you had on any given occasion during the last month?

##### CAGE (IN THE LAST 12 MONTHS)

- Have you ever felt you should Cut down on your drinking?
- Have people Annoyed you by criticizing your drinking?
- Have you ever felt bad or Guilty about your drinking?
- Have you ever had a drink first thing in the morning to “steady your nerves” or get rid of a hangover (Eye Opener)?

##### SCREEN IS POSITIVE IF:

- A positive response on 1 or more questions from CAGE and/or consumption:
  - Men > 14 drinks/week or > 4 drinks/occasion
  - Women > 7 drinks/week or > 3 drinks/occasion
  - Over 65 years old > 7 drinks/week or > 3 drinks/occasion

##### THEN ASSESS FOR:

- Medical problems: blackouts, depression, hypertension, injury abdominal pain, liver dysfunction, sleep disorders
- Laboratory: Liver function tests, macrocytic anemia
- Behavioral problems
- Alcohol dependence

##### INTERVENE:

###### *If at-risk/harmful drinker:*

- Advise patient of risk.
- Set drinking goals.
- Provide referral to primary care.

###### *If alcohol dependent drinker:*

- Assess acute risk of intoxication/withdrawal
- Negotiate referral (i.e. detoxification, AA and primary care).

*Reference:* The Physician's Guide to Helping Patients with Alcohol Problems. National Institute on Alcohol Abuse and Alcoholism. NIH Publication No. 95-3769 and the ASAM reference guide

- For anonymous online version of this screening see [www.alcoholscreening.org](http://www.alcoholscreening.org)
- For advice and resources on how to help friends with their drug and alcohol use see [http://www.theantidrug.com/pdfs/resources/teen/Step\\_Up\\_Brochure.pdf](http://www.theantidrug.com/pdfs/resources/teen/Step_Up_Brochure.pdf)

# Acknowledgements

Many individuals and organizations contributed to this work and report.  
The authors wish to express special appreciation to:

## **OUR FUNDERS:**

- The Earl and Doris Bakken Foundation
- Hawaii State Department of Transportation – Hawaii Safety Section
- Hawaii State Farm Insurance – for formatting and printing of this report

## **OUR PARTNERS:**

### **HAWAII STATE DEPARTMENT OF HEALTH - INJURY PREVENTION AND CONTROL PROGRAM**

- Galanis, Ph.D.
- Eric Tash
- Kari Benes
- Jan Yokoyama - retired

### **HAWAII COUNTY POLICE DEPARTMENT**

- Chief Harry Kubojiri, Captain James Sanborn
- Major Randy Apele
- Sergeant Kelly Kaaumoana-Matsumoto
- Dieter Blattler
- Winnie Cabral

### **HAWAII COUNTY PROSECUTOR'S OFFICE**

- Charlene Iboshi
- Mitch Roth

### **HAWAII FIRE DEPARTMENT, BUREAU OF EMERGENCY MEDICAL SERVICES**

- Ralph Yawata

### **EMERGENCY MEDICAL SERVICES**

- Linda Rosen, M.D., MPH
- Peggy Sale, R.N.

### **BIG ISLAND TRAUMA ADVISORY COMMITTEE**

- Louise Fincher – Big Island Trauma Advisory Committee

### **HAWAII STATE DEPARTMENT OF TRANSPORTATION**

- Brennon Morioka
- Lee Nagano
- Sean Hiraoka
- Scott Haneberg

### **RETIRED EMERGENCY PHYSICIAN AND COUNTY COUNCIL MEMBER**

- Fred Holschuh, M.D.

### **MADD – HAWAII COUNTY**

- Lisa Onorato

### **MADD – HAWAII STATE**

- Carol McNamee
- Arkie Koehl
- Jennifer Dotson

### **HAWAII COMMUNITY COLLEGE - COURT MONITORING PROJECT**

- Donnalyne Kalei

### **FAMILIES OF TRAFFIC VICTIMS**

- The Braden Family
- The Apostadrio Family
- The Gonsalves Family

### **W.M. KECK OBSERVATORY FOR IN-KIND DONATION OF MEETING SPACE**

- Steve Shimko

*Disclaimer: The data presented was accurate at press time to the best of our knowledge.*

*Please contact us if you believe there are any inaccuracies, (808) 887-2425).*

## Media Coverage

- |                     |                         |                                      |
|---------------------|-------------------------|--------------------------------------|
| • October 13, 2010  | West Hawaii Today       | Big Island plagued by DUI deaths     |
| • September 5, 2010 | Tribune-Herald          | Big Isle is DUI capital of state...  |
| • August 19, 2009   | Tribune-Herald          | Big Isle roads deadly                |
| • January 18, 2008  | West Hawaii Today       | Ellisor given 10 years in drunken... |
| • February 18, 2007 | The Honolulu Advertiser | Families grieve crash victims...     |
| • June 06, 2006     | West Hawaii Today       | Drunk driving laws are toughened...  |
| • March 29, 2006    | West Hawaii Today       | Woman faces negligent homicide...    |
| • November 12, 2005 | Tribune-Herald          | Big Island drivers at risk...        |
| • August 26, 2005   | Tribune-Herald          | Big Isle DUI deaths rise...          |
| • August 24, 2005   | Tribune-Herald          | Trail of tears...                    |



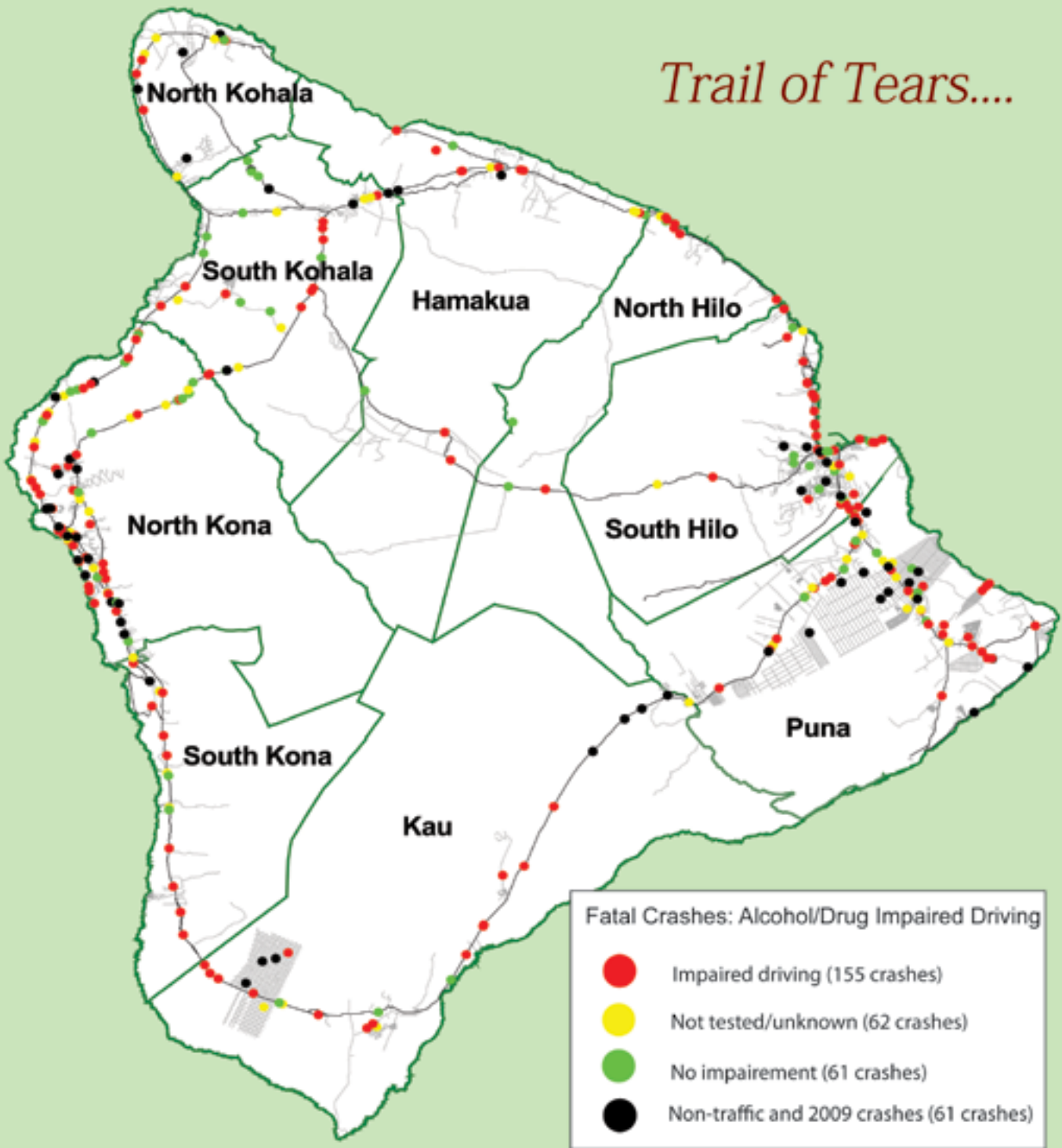
**SIGN WAVING IN WAIMEA**



**SIGN WAVING IN WAIKOLOA**

## Locations of Impaired Driving Fatal Crashes 2000-2009

*Trail of Tears....*



**Together We CAN Prevent Impaired Driving Deaths**

Source: Injury Prevention & Control Program, Hawaii State Department of Health. For more information visit [www.nhop.org](http://www.nhop.org)

# Notes

A series of horizontal dotted lines for writing notes.

# Notes

A series of horizontal dotted lines for writing notes.

# Notes

A series of horizontal dotted lines for writing notes.

# What you can do now:

Commit to yourself, family, friends, customers and coworkers:

- “I’ll drive sober or get a ride.”
- “I’ll help my family and friends to drive sober or get a ride.”



NORTH HAWAII OUTCOMES PROJECT

65-1241 Pomaikai Place #7 • Kamuela, Hawaii 96743  
Phone: (808) 887-2425 • Fax: (808) 887-1474 • Website: [www.nhop.org](http://www.nhop.org)