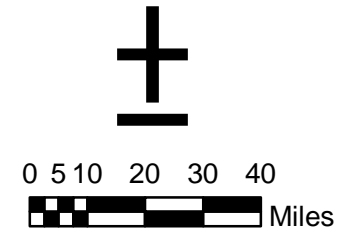
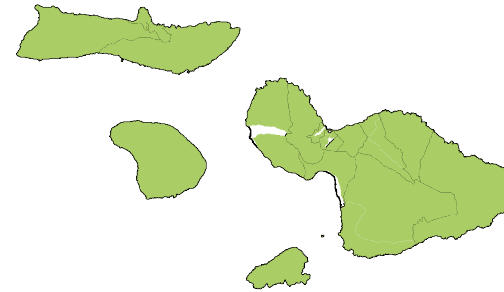
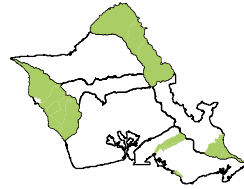
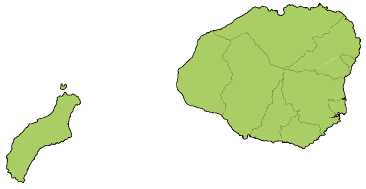




Medically Underserved Area / Population

STATE OF HAWAII
2007



Legend

-  Medically Underserved Area / Population
-  Not - Medically Underserved Area / Population

There are guidelines to determine if a place is a medically underserved area or population area based on the Index of Medical Underservice (IMU) variables. The IMU involves four variables;

- ratio of primary medical care
- physicians per 1,000 population,
- infant mortality rate,
- percentage of the population with incomes below the poverty level, and
- percentage of the population age 65 or over.

For more information visit <http://bhpr.hrsa.gov>

